

# SUBMERSIBLE MOTOR

## 9" REWINDABLE MOTORS

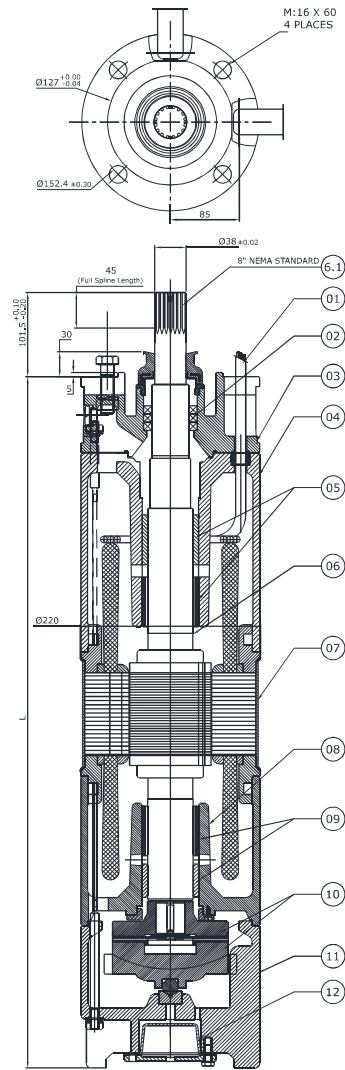
### TECHNICAL SPECIFICATIONS:

- 9" Water Lubricated Submersible Motors are rewindable.
- Coupling dimensions: 8" NEMA standard.
- Winding wire: PVC winding
- Degree of protection : IP68.
- Max water temperature : 35°C.
- Starts per hour : 20 time (Max).
- Allowable voltage variation : +6% - 10%.
- Motor shaft of Stainless steel.
- Stator shell of Stainless steel.
- Max depth immersion : 350 M.
- Mounting : vertical
- Motor Cable length : 3 Meter / 3 Core with separate earth cable.
- Cooling Flow : V:0.2 M/S.
- Coolant : Clear Water.

### VERSIONS:

Three Phase : 45 kW To 93 kW / 380-415 Volt / 50 Hz  
 Motor With Other Voltage and frequency ratings are available on specific Demand.

## 9" REWINDABLE MOTORS



SR NO.	PARTS NAME	MATERIAL
01	CABLE 3 CORE /4 CORE	EPR/P.V.C
02	OIL SEAL	N.B.R
03	ADAPTOR	CAST IRON (FG-200)
04	UPPER HOUSING	CAST IRON (FG-200)
05	BEARING BUSH	LTB-4 (2% Ni.) / M.S-N.B.R
06	ROTOR SHAFT	SS 431
07	MOTOR SHELL	STAINLESS STEEL
08	LOWER HOUSING	CAST IRON (FG-200)
09	BEARING BUSH	LTB-4 (2% Ni.) / M.S-N.B.R
10	THRUST BEARING SET	CARBON / S.S.420
11	MOTOR BASE	CAST IRON (FG-200)
12	PRESSURE CUP	N.B.R
13	ALL HARDWARE	S.S.304

P <sub>N</sub>	P <sub>W</sub>	MOTOR WEIGHT		
		Cast Iron	Cast Iron	
[kW]	[HP]	[mm]	[kg]	[kg]
45.0	60.00	1235.0	165.0	183.0
52.0	70.00	1365.0	262.0	342.0
55.0	75.00	1365.0	262.0	342.0
67.0	90.0	1435.0	275.0	355.0
75.0	100.0	1505.0	300.0	360.0
93.0	125.0	1505.0	300.0	360.0

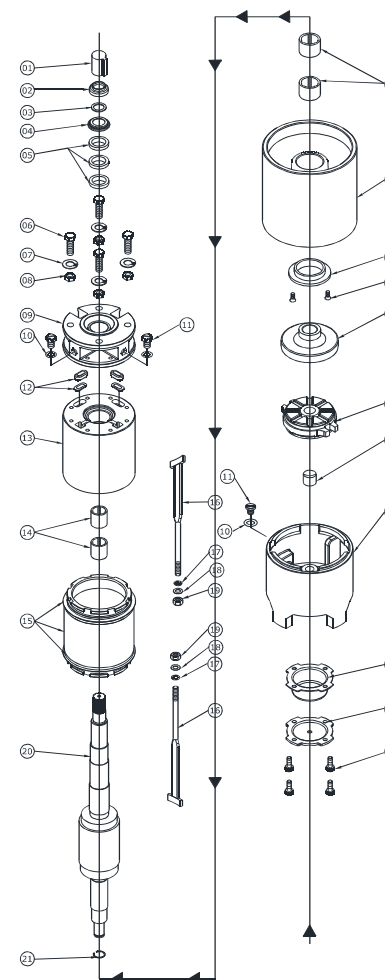
## SUBMERSIBLE MOTOR

### Technical Data of 9" Motors / 50 Hz

PN		Thrust Load [N]	UN [V]	nN [min-1]	IN [A]	IA [A]	η (Eff.) [%] at % load			cos φ (PF) at % load			TN [Nm]	TA [Nm]
[H.P.]	[kW]						50	75	100	50	75	100		
60	45	45000	380	2905	93.1	490	86.0	86.2	85.3	0.80	0.87	0.89	155	219
			400	2915	90	520	85.5	86.4	85.9	0.75	0.84	0.87	154	241
			415	2920	88	540	84.8	86.3	85.7	0.70	0.80	0.85	154	262
75	55	45000	380	2910	114	624	86.8	87.0	85.6	0.79	0.85	0.89	193	301
			400	2915	110	660	85.9	86.9	86.3	0.73	0.83	0.87	193	341
			415	2920	108	687	84.9	87.1	86.1	0.66	0.79	0.86	193	367
100	75	45000	380	2905	153	891	86.8	87.2	85.8	0.78	0.85	0.88	258	420
			400	2920	148	942	86.2	87.4	86.8	0.75	0.84	0.85	257	471
			415	2915	146	983	85.5	86.8	86.5	0.68	0.78	0.84	257	511
125	93	45000	380	2905	187	1185	87.9	88.5	87.7	0.78	0.84	0.87	305	558
			400	2915	182	1275	87.3	88.4	87.8	0.72	0.82	0.86	304	627
			415	2925	183	1309	86.3	87.7	87.6	0.66	0.77	0.84	304	677

- PN - Rated Output
- F[N] - Axial Thrust Load
- UN - Rated Voltage
- nN - RPM
- IN - Full Load Current
- IA - Starting Current
- η - Motor Efficiency
- cosφ - Power Factor
- TN - Full Load Torque
- TA - Starting Torque

### Exploded Drawing of 9" Motor



Sr.No.	PARTS NAME
01	ROTOR CAP
02	SAND GUARD
03	TEFLON WASHER
04	UPPER CAP
05	OIL SEAL
06	HEX BOLT
07	SPRING WASHER
08	HEX NUT
09	ADOPTOR
10	DRAIN PLUG 'O' RING
11	DRAIN PLUG
12	GROMMET & WASHER
13	UPPER HOUSING
14	BEARING BUSH
15	STATOR BODY FINISH FLANGE (USE FOR UPPER & LOWER SIDE)
16	T-BOLT(UPPER SIDE ) T-BOLT(LOWER SIDE )
17	T-BOLT 'O'RING
18	T-BOLT WASHER
19	NYLOCK NUT
20	ROTOR FINISH
21	CIR CLIP( USE FOR ROTOR)
22	BEARING BUSH
23	LOWER HOUSING
24	C.T BEARING
25	C.S.K SCREW
26	COUNTER BEARING
27	FIX ROCKER
28	MOTOR BASE
29	PRESSURE CUP
30	MOTOR BASE PLATE
31	HEX BOLT